

**WESTMOOR** 

**WESTMOOR ENGINEERING LTD**



## Watertight Engineering

Specialists in the design and manufacture of  
watertight, weathertight and gastight doors and hatches

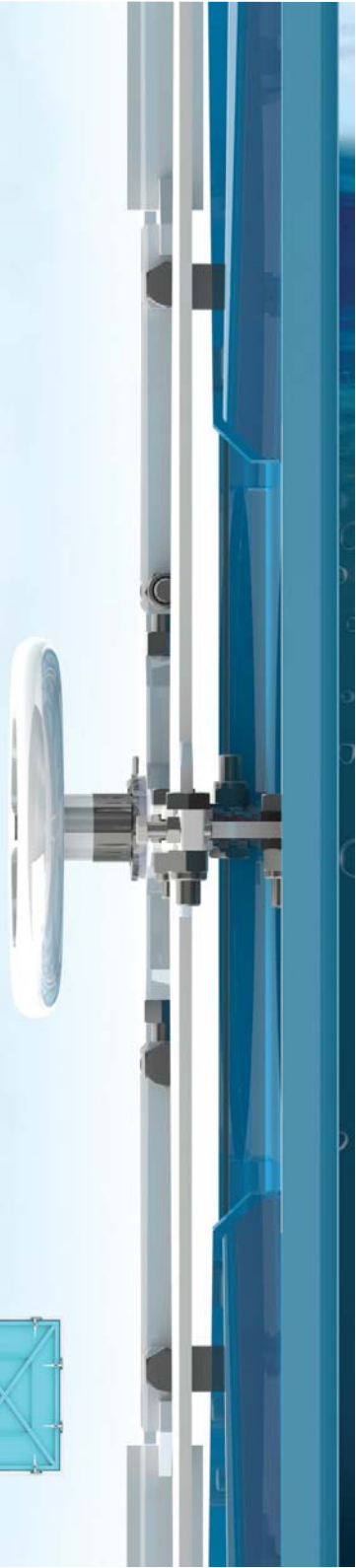


# Welcome to Westmoor Engineering Ltd

Based in the North East of England, Westmoor Engineering Ltd has been designing, testing and manufacturing bespoke watertight, weathertight and gastight door solutions for industry since 1898.

We have developed a reputation within the industry for our commitment to quality and customer service. This reputation is based on our culture of design and manufacturing expertise combined with the application of modern engineering technology, manufacturing and management systems.

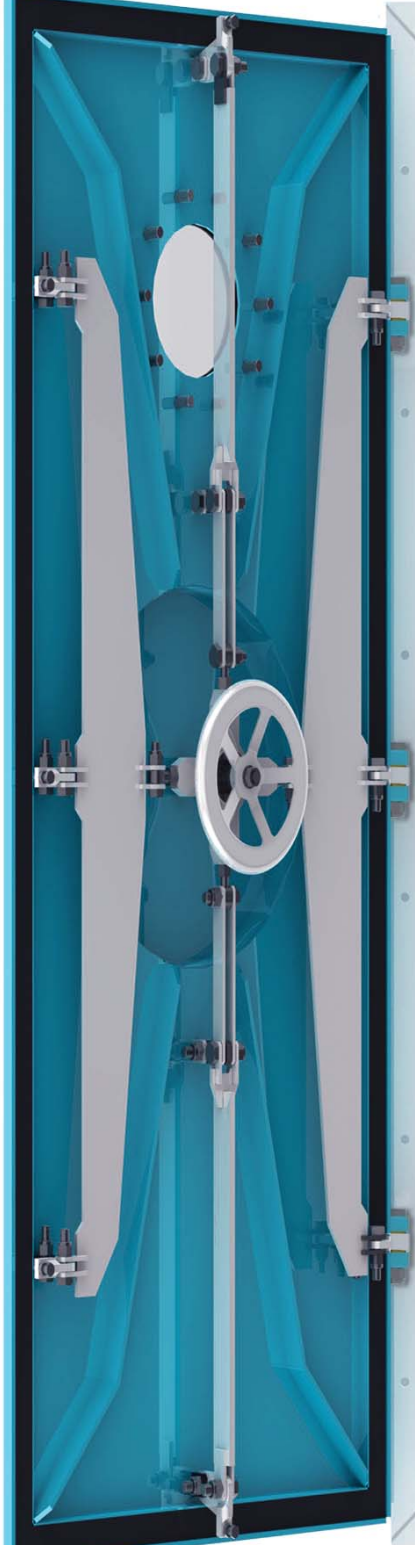
**Westmoor Engineering Ltd. is a member  
of the Renown Group of companies**





“Providing bespoke door and access solutions to the oil and gas, marine, renewable energy and civil engineering industries”





## Westmoor Product Range

All Westmoor doors, hatches and manholes are:

- Made to order to suit your exact requirements
- Supplied as 'self contained' units mounted on dedicated frames or coamings
- Ready for welding or bolting onto the adjacent structure
- Available in steel, stainless steel and aluminium materials
- Available in natural finish, primed or coated in accordance with client requirements
- Available with square, radii or semi-circular door and frame profiles
- Additional options include locking (hasp & eye for padlock, rimlock/latch), hold back facilities and port lights

Westmoor products can also be integrated into environmental and civil engineering projects with the use of welded lug assemblies for casting directly into concrete structures.

## New Product Development

### Series 350A Watertight/Weathertight Door



The newest addition to Westmoor's range, the Series 350A is aesthetically pleasing and provides either watertight or weathertight protection.

Constructed from aluminium and GRP, the door is lightweight and ideal for the marine environment, including small to medium sized boats and marine structures. Using new methods of manufacture, the door is both lightweight and effective under high pressures.

### Series 1000 Utility Door



The Series 1000 Utility door is a versatile, cost effective solution for a wide variety of applications. Operated by a single lever, the Series 1000 quick-acting, easy to use and maintain.

The door can be engineered to your exact specification with the following resistance: watertight, weathertight, acoustic, gastight, spraytight.



## Series 100 Watertight Doors

The Series 100 range of doors provides watertight protection to any entrance or compartment. The door enables watertight integrity against a head of water applied from either side.

The progressive closing action through the turning of the handwheel, combined with an efficient, fully adjustable clamping mechanism ensures a leak free seal with minimum effort.



## Series 200 Weathertight Doors

The Series 200 range of doors provides weathertight protection to any exposed entrance or compartment. The door is secured in the closed position by clip handles independently operated from either side of the door.



## Series 300 Weathertight Doors

The Series 300 range of doors also provides weathertight protection to any exposed entrance or compartment. The door is secured in the closed position by a series of clips linked together and operated from either side by a single level-action handle.



## Series 400 Spraytight Doors

The Series 400 range of spraytight doors meets all the requirements for a door above the freeboard deck. The door is secured in the closed position by 2 clip handles independently operated from either side of the door.



## Series 500 Gastight Doors

The Series 500 gastight door range resists against a slight pressure. The door is secured in the closed position by either 2 or 3 clamping points which are linked and operated by a single lever from either side of the door.



## Series 600 Watertight and Weathertight Hatches

The Series 600 range of deck hatches provides watertight or weathertight protection to any compartment or below-deck space. The range includes escape hatches featuring either central handwheel operation, clip handles or toggle clamps.

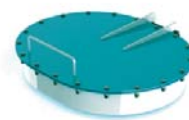
The range also includes a flush hatch offering watertight protection to any compartment whilst maintaining a flush deck.

Flush hatches may be required in areas where there is passenger or traffic movement and regulations permit the use. The flush hatch is operable from above via a portable 'T' key and from below by independent clip handles.



## Manholes

Westmoor also offers a range of watertight manholes, these can be loose or hinged-lidded designs with bolted or latched securing arrangements.



Westmoor has an established provenance in the provision of bespoke access solutions to the oil and gas, marine, renewable energy and civil engineering markets...

Areas of application include:

Marine vessels, fixed offshore platform installations, FPSO's, equipment enclosures, wind turbines, civil and environmental infrastructure projects. Indeed any situation which requires an innovative engineering solution.

Westmoor's reputation is based upon a strong culture of proven design and manufacturing expertise combined with the application of modern engineering technology, manufacturing and management systems.

This reputation is underpinned by:

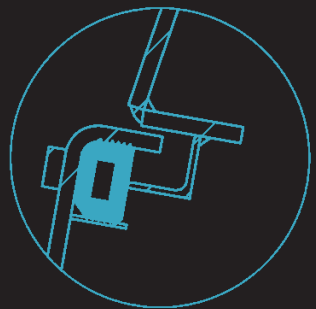
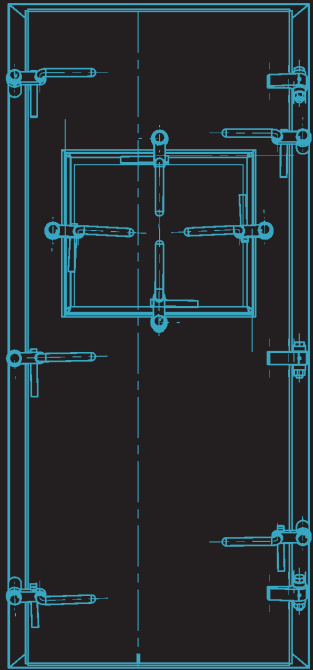
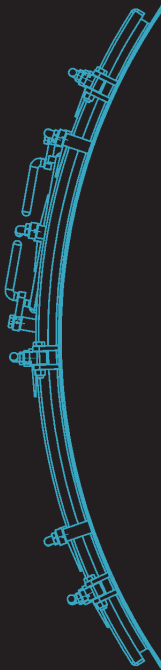
A proven ability to deliver 'in full/on time' to specification and budget

Continuous innovation and development

A Quality Assurance system in compliance with ISO9001:2008

A vigorous HSE record and management system

An established, competitive and reliable supply chain



## Design

Westmoor uses a range of software packages capable of creating 2D and 3D computer aided designs. Our design team is able to develop concept designs into working solutions to suit individual client requirements.

Westmoor Engineering Ltd implements a New Product Development (NPD) programme to increase the range and adaptability of existing designs and ensure we offer customers the right solution to meet their project requirements.

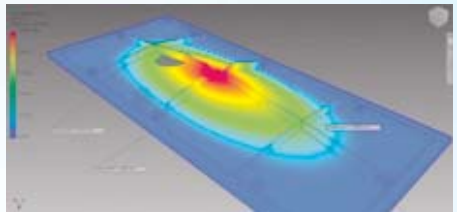
Westmoor works closely with the leading classification societies including Lloyd's Register, American Bureau of Shipping (ABS) and Det Norsk Veritas (DNV).

## Analysis

Westmoor undertakes detailed analysis to validate new concepts and products. This activity is supported by Westmoor's close links with local universities who provide their expertise and software. Analysis helps optimise product design, performance and cost.

Westmoor conducts in-depth analysis such as:

- Finite element
- Process modelling
- Advanced stress
- Fatigue and vibration
- Thermodynamics



## Testing

Westmoor operates a range of verification techniques including:

- Hydrostatic pressure testing
- Fire testing
- Weathertight and spraytight testing
- Gastight and pneumatic testing

Westmoor's in-house testing facilities perform watertight, weathertight and gastight tests by subjecting products to high pressures from either compressed air or water. Westmoor also has a thermodynamic testing facility to provide information and data on material and product performance in fire situations.

## Manufacturing

Westmoor operates from a modern, fully equipped design and manufacturing facility measuring 11,500 sq metres and located within Northumberland, United Kingdom. Our facility houses leading-edge cutting, forming, machining, coating and finishing facilities and enables Westmoor to achieve high levels of quality control and repeatability for all of its processes. Westmoor is part of Renown Group, which has three large UK manufacturing facilities providing significant engineering resource and capacity.

## Quality

Westmoor's ISO9001 Accreditation includes the design and manufacture of watertight doors and hatches up to a hydrostatic pressure rating of 2.0 bar. Westmoor has an in-house inspection facility, including Faro arm and Coordinate Measurement Machine (CMM).

Westmoor Engineering Ltd is a member of the Renown Group's Physical Asset Protection Division.



Northumberland Business Park West, Dudley, Cramlington,  
Northumberland, NE23 7RH, United Kingdom  
Telephone: +44 191 250 0113. Fax: +44 191 250 1980  
Email: [sales@westmoorengineering.co.uk](mailto:sales@westmoorengineering.co.uk).  
Website: [www.westmoorengineering.co.uk](http://www.westmoorengineering.co.uk)